



**PROTECTED BECAUSE
THEY'RE CONNECTED**

blacklinesafety



Our primary reason for looking at Blackline was for the connectivity, but what really sold us was the data analytics. It's really leading-edge when compared to the competition. From knowing the last time someone bumped and calibrated their device to heat mapping, clusters of H₂S, the data has really helped us get ahead of evolving risk.

—Leading Energy Company in the Permian Basin



ADVANCED GAS DETECTION AND SAFETY FOR OIL AND GAS WORKERS

Securing the essential energy provided by the oil and gas industry comes with a high risk of occupational hazards. Whether it's the dangers of hydrogen sulfide (H₂S) exposure, a worker entering a confined space, an emergency response or evacuation, or the risks lone workers face in remote locations, making sure everyone gets home safe after every shift is priority number one.

Reliable, connected safety devices are a critical link between workers and contractors and the protection they need—and no one has you covered better than Blackline Safety.

Our next generation of intrinsically safe connected safety technology protects over 165,000 people around the globe, including oil and gas industry workers.

Our suite of industry-leading personal and area monitors can monitor up to 20 different gases, and up to 8 simultaneously. These cloud-connected devices also provide maximum visibility into your worksites and a system for managing both compliance and evolving risk like never before.

And the best part? Automated reports and analytics can help you unlock opportunities to take your safety program to the next level.

YOU CAN HAVE IT ALL

Reap the Rewards of Game-Changing Technology

REAL-TIME VISIBILITY

Location-enabled equipment, linked to the [Blackline Live](#) cloud-connected web portal, offer full situational awareness from any Internet-connected device.

AUTOMATED ANALYTICS

Out-of-the-box or custom reports mean you can leverage actual—not subjective—data to analyze risks, compliance and productivity and identify actionable opportunities for proactive safety.

FAST DEPLOYMENT

Instant connectivity gets you up and running in mere minutes wherever a device is placed or worn, with minimal how-to-use training required. Plus, easily assign and manage devices in [Blackline Live](#).

SCALABLE GAS DETECTION

Configurable for single-gas, multi-gas or multi-gas with pump monitoring, with swappable cartridges to tailor gas sensors to match possible hazards.

LONE WORKER PROTECTION

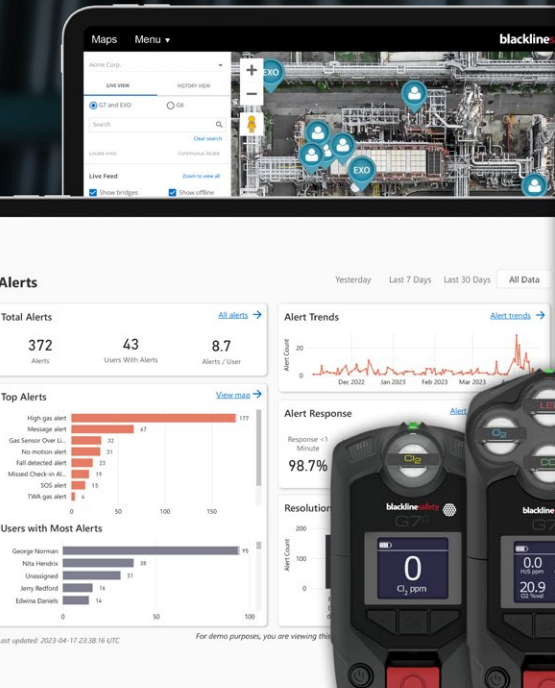
Extensive person-down safety features include fall and no-motion detection, missed check-in alarms, and an emergency SOS to call for immediate assistance.

TWO-WAY COMMUNICATIONS

Two-way voice, text messaging and push-to-talk options to stay connected to the safety of workers, in any situation.

RELIABLE CONNECTIVITY

Integrated cellular, or optional satellite, connectivity for a failsafe way to keep in touch—even in the most remote locations.



int updated: 2023-04-17 23:38:16 EDT
For demo purposes, you are viewing this



TRUSTWORTHY GAS SENSOR PORTFOLIO

One of the largest portfolios of advanced [gas sensors](#)

- Ammonia (NH₃) & NH₃: high range
- Carbon dioxide (CO₂)
- Carbon monoxide (CO) & CO: high-range
- Carbon monoxide: hydrogen-resistant (CO-H)
- Carbon monoxide and hydrogen sulfide (COSH (CO/H₂S))
- Chlorine (Cl₂)
- Chlorine dioxide (ClO₂)
- Combustible infrared (LEL-IR)
- Combustible MPS (LEL-MPS)
- Hydrogen cyanide (HCN)
- Hydrogen fluoride (HF)
- Hydrogen sulfide (H₂S) & H₂S: high-range
- Nitrogen dioxide (NO₂)
- Oxygen (O₂)
- Ozone (O₃)
- Photoionization detection (PID ppm)
- Sulfur dioxide (SO₂)

CONNECTED SAFETY IN ACTION

Harness Safe and More Efficient Shutdowns and Turnarounds

More people on site, contractors who may not be as familiar with your workplace and procedures, and schedule and cost pressures can all amplify safety and efficiency concerns.

Boost performance with:

- Easy-to-use devices with little training required
- Blackline Live web-based portal to easily assign and manage equipment
- Live map for visibility into workforce well-being in real-time
- Analytics to identify opportunities for operational improvements

FLEXIBLE BUYING OPTIONS

Choose to rent, lease or own – means our equipment can fit into your CAPEX or OPEX budget.



Get In and Out Faster

Confined space entries can leave your workers vulnerable due to a lack of visibility into their wellbeing, poor communications and the potential presence of multiple gas and tripping hazards. Boost safety with:

- Remote real-time situational awareness
- Switchable pre-entry and continuous gas monitoring modes on equipment
- Swappable cartridges to configure the gas sensors to match possible hazards
- Add extra four-gas module to detect up to eight gases simultaneously
- Optional gamma radiation detection



Streamline Incident Responses

Evacuation management and incident response are necessary elements of safety planning for oil and gas operations. Boost response times with:

- Real-time location, gas readings and wellness status of each connected worker to track the response
- Mass notifications to direct individuals or entire teams to the nearest muster point during an evacuation, or direct first responders to a worker in distress
- No more time-consuming manual headcounts during drills or a response
- Immediate post-drill or post-response data to identify opportunities to improve
- Alertlink proximity-based messaging shares real-time alerts with nearby devices (other G7cs and EXOs) during high urgency events

CASE STUDY

NICK'S STORY



I was completely passed out. Had my co-worker's device not automatically triggered an alert from H₂S exposure, they might not have known they were in danger too. The SOC [Safety Operations Center] helped us get fast emergency services support and stayed on the line until everything was ok.

[Read](#) the real-life incident of how G7 wearables prevented a fatality at a pipeline terminal in rural Texas.



ALL-IN-ONE HIGH-PERFORMANCE SOLUTION

Blackline Safety's scalable devices have the reliable connectivity, gas detection and real-time monitoring you need to meet the demands of any oil and gas operation. And with customizable capabilities, you can get ahead of all the risks your workers face, no matter the job, location or worksite.

Add-on value through data analytics—all through a single partner—ensures you've got everything you need to take your health and safety program and facility operations to the next level.

Join 2,250+ brands who use Blackline Safety, including these oil and gas companies:



ConocoPhillips



ExxonMobil



cenovus
ENERGY

Pioneer



dcp
Midstream



blacklinesafety.com/oil-gas

blacklinesafety

blacklinesafety.com/oil-gas

NORTH AMERICA

1 800 486 8889 | sales@blacklinesafety.com

EUROPE

+44 1787 222684 | eusales@blacklinesafety.com

REST OF WORLD

+1 403 451 0327 | sales@blacklinesafety.com