

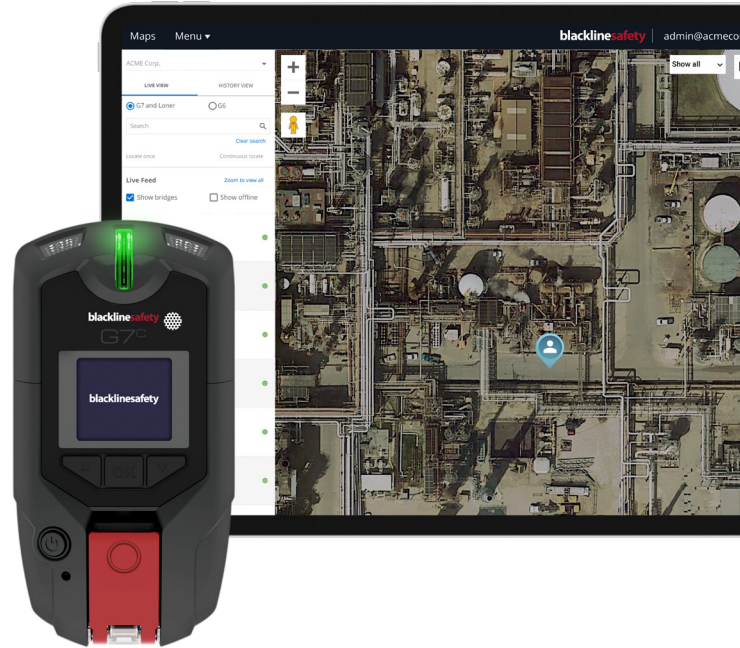


**NO CALL UNANSWERED.  
NO INCIDENT UNDETECTED.**

G7 Lone Worker monitors ensure your most vulnerable team members are never truly alone. This wearable technology lifeline keeps them connected to immediate help if needed. The moment something happens, vital incident data is communicated to the cloud, so a worker's location and safety status is always known.

Layers of communication provide comprehensive protection to address common lone worker emergency situations such as motor vehicle accidents, falls, health and weather events, and more.

With the addition of 24/7 live monitoring through Blackline's in-house Safety Operations Centre or our global Alarm Receiving Centre partners, incidents are responded to and managed quickly. With G7, your workers can confidently get their job done, knowing that help is always on the line.



**BUILT-IN CAPABILITIES:**

 <p>Real-time direct-to-cloud cellular connectivity, with optional satellite for remote locations</p>	 <p>GPS to locate people and devices quickly</p>	 <p>Lone worker, single-gas, multi-gas, or multi-gas pump protection</p>	 <p>Patented emergency SOS latch</p>
 <p>Automatic no motion, fall detection and missed check-in alerts</p>	 <p>Push-to-Talk (walkie-talkie) (optional)</p>	 <p>Two-way voice and text messaging (optional)</p>	 <p>Intrinsically safe</p>



**Blackline Safety protects 165,000 workers in 70+ countries**

# ALL-IN-ONE CONNECTED SAFETY SOLUTION

## KEY BENEFITS

### Real-time visibility

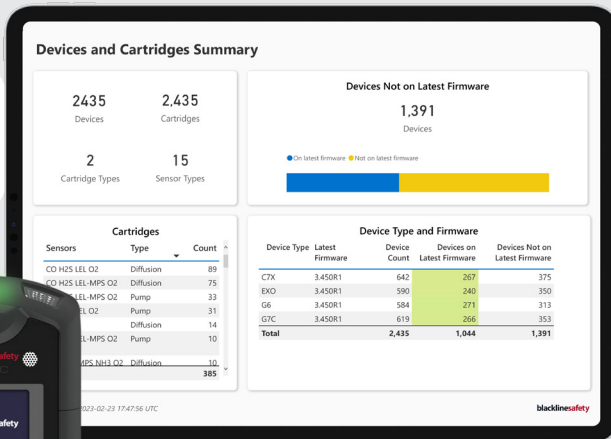
- ✓ Built-in cellular connectivity, with optional satellite and portable bridge, to keep workers safe and connected in remote locations
- ✓ Direct-to-cloud data streaming to Blackline Live software platform for real-time information at your fingertips
- ✓ Up-to-date worker location and safety status information to take quick and informed action

### Immediate incident response

- ✓ Communication options -- including two-way voice communication, text messaging and push-to-talk -- to meet your diverse needs and keep your workers connected with monitoring personnel or each other
- ✓ Optional professional 24/7 live monitoring and dispatch to exact location to ensure rapid response
- ✓ Manual, automatic, and time-based alerts and notifications to stay connected with the safety of each worker, in any situation

### Improve safety and compliance

- ✓ Understand worker behaviours with insights into how, when and where devices are used, calibrated and bump tested
- ✓ Time and location-stamped data for easy incident review, eliminating manual data collection and alert reporting
- ✓ Automated out-of-the box reporting, or customisable analytics, to help you understand gas exposure, improve efficiency, and manage compliance



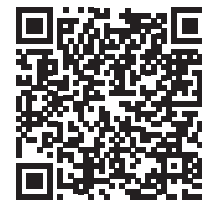
## SAVE TIME AND MONEY

G7's automated, over-the-air firmware and configuration updates mean your equipment will always operate exactly how you need it to, with zero downtime.

### VIEW DETAILED SPECIFICATIONS



### VIEW SERVICE PLAN OPTIONS



**NORTH AMERICA** TOLL-FREE 1.800.486.8889 | sales@blacklinesafety.com

**EUROPE/UNITED KINGDOM** PHONE +44.1787.222684 | eusales@blacklinesafety.com

**INTERNATIONAL** PHONE +1.403.451.0327 | sales@blacklinesafety.com

**blacklinesafety**

blacklinesafety.com