

**blacklinesafety**

# POWERING DATA-DRIVEN SAFETY

Technology to transform workplace safety and operational performance



# YOUR COMPLETE CLOUD-CONNECTED SOLUTION

There are lots of reasons to invest in connected safety technology to protect your people-from real-time visibility to faster and better incident response to data-backed insights to optimize your operations.

With over 150,000 device users in more than 70 countries, our trusted cloud-connected safety solutions are used by some of the world's leading global brands to protect their most at-risk workers, improve HSE practices and drive a more robust ESG profile.

Our connected safety hardware, software and services can meet you where you are today and scale as needed, providing you with technology that does what you need-now and in the future-without limitation.



## BLACKLINE LIVE

### THE INCIDENT RESPONSE AND REPORTING ENGINE

**CONNECTED WEARABLES**  
Stream event, location, user, and gas data direct to the cloud



**CONNECTED AREA MONITORS**  
Stream event, location, and gas data direct to the cloud



**24/7 LIVE MONITORING**  
Provides round-the-clock live alerts coverage by professionally trained agents



**BLACKLINE LIVE PORTAL**  
Enables real-time visibility, insights and two-way communication with workers



**REPORTING & ANALYTICS**  
Collects, sorts and delivers - automatically and seamlessly - data from usage into easy-to-read reports



# REAL-TIME VISIBILITY, REAL-TIME SAFETY

G6 and G7 wearables and G7 EXO portable area monitors, with unmatched connectivity and precise location technology, deliver ultimate visibility across your worksites. When paired with 24/7 live monitoring (G7 & G7 EXO only) and live alerts, they power high performance emergency response and evacuation management to ensure no worker is left behind.

Our Blackline Live portal and Blackline Analytics software bring it all together by providing the real-time information you need to save lives now, all while building a stronger safety program for tomorrow.



## CONNECTED SAFETY SOLUTIONS

### G6 WEARABLE

- ✓ Single-gas detection for H<sub>2</sub>S, CO, O<sub>2</sub>, SO<sub>2</sub>
- ✓ Direct-to-cloud cellular connectivity
- ✓ Locate people and devices quickly using GPS
- ✓ Emergency SOS
- ✓ Rechargeable battery with up to one year battery life
- ✓ Device life of 4+ years

### G7 WEARABLE

- ✓ Integrated 4G cellular connectivity, with optional satellite for remote locations
- ✓ Connected out of the box, no Wi-Fi or Bluetooth required
- ✓ Lone worker, single-gas or multi-gas protection
- ✓ Four cartridge options, including diffusion and pump, with over 20 sensors tailor gas detection to your needs
- ✓ Patented SOS latch lets your people call for help from wherever they are
- ✓ Automated no motion, fall detection and missed check-in capabilities trigger an alert, even if the worker can't
- ✓ Push-to-Talk for each communication between workers
- ✓ Two-way voice communication to talk directly with workers – critical during an emergency

### G7 EXO PORTABLE AREA GAS MONITOR

- ✓ Integrated 4G cellular connectivity, with optional satellite module for remote locations
- ✓ Drop and go deployment with instant cloud-connectivity, no networking required
- ✓ 100+ day battery life for unmatched reliability
- ✓ Over 20 gas sensors tailor gas detection to your needs
- ✓ Built for extremes to perform in any condition



## YOU CAN HAVE IT ALL

Blackline Safety's complete connected safety solutions have all the tools you need—all in one place—to integrate seamlessly into your existing system and grow a data-driven safety program that sets you up for long-term success.



### 24/7 LIVE MONITORING

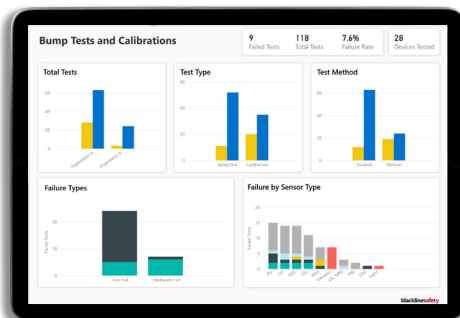
We help you take safety to the next level with optional professional 24/7 live monitoring through our in-house, five diamond certified Safety Operations Center (SOC) or global Alarm Receiving Center partners. Agents expertly manage emergency alerts in real-time and gather critical insights for an informed response.

- ✓ Alerts received in Blackline Live in under two seconds
- ✓ Alerts responded to by the SOC in fewer than 60 seconds
- ✓ Capable of sending mass notifications to streamline evacuation management

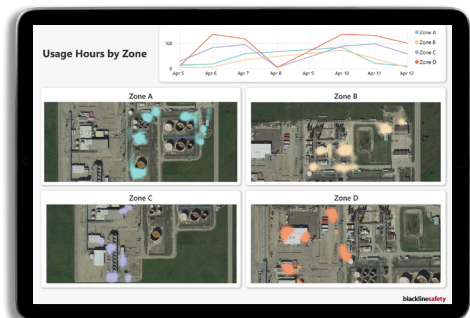
## HARNESS INSIGHTS AND IMPROVE PERFORMANCE

**Blackline Safety Data Services** help you identify trends and uncover patterns in your operations to improve safety, boost efficiency and manage compliance. Automated analytics are powered by direct-to-cloud live streamed data from your Blackline safety devices.

This fully scalable offering can meet you where you are today and grow with you when you are ready.



Start with **Essential Reports**, available right out-of-the-box through the Blackline Live portal, to help solve common challenges around compliance, performance, and safety



Go beyond with **Custom Analytics**, to harness deeper insights with tailored dashboards and reports to deliver the metrics that matter most to your business

# BLACKLINE ANALYTICS ESSENTIAL REPORTS

## AUTOMATED REPORTING, EMPOWERED DECISION-MAKING

Included with every Blackline Safety service plan and accessed through the Blackline Live portal, Essential Reports offer data-informed opportunities for safety and operational improvements.

Essential Reports save time and effort by removing complexity and errors from manual data collection. And their interactive nature means you can drill down to understand safety incidents, gas events, usage and compliance.



## COMPLIANCE & FLEET MANAGEMENT ANALYTICS

This suite of analytics helps you make sense of trends in compliance and stay on top of fleet maintenance.

Included Reports:

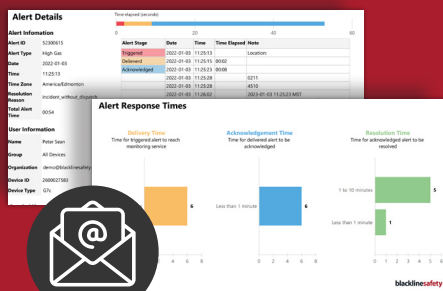
- ✓ Usage and Compliance
- ✓ Bump Tests and Calibrations
- ✓ Devices and Cartridges
- ✓ Device Assignment History
- ✓ Docks
- ✓ Location Beacons

## PERFORMANCE & SAFETY ANALYTICS

Going beyond compliance, this suite of analytics helps you monitor performance and safety trends in your company globally, regionally, or within teams.

Included Reports:

- ✓ Overview Dashboard
- ✓ Alerts
- ✓ Events
- ✓ Events Map
- ✓ Gas Exposure
- ✓ LEL-MPS Readings
- ✓ Worker Safety Analytics
- ✓ G7 EXO Gas Analytics



## EMAILED REPORTS

You decide how you want to receive your Essential Reports. Set up emailed reports on critical metrics direct to your inbox or leverage the suite of interactive reports available in the Blackline Live portal. Emailed reports are available for **alerts, usage, and high gas exposures** helping your managers deliver informed safety talks that boost safety culture—all based on recent experiences at your own sites.

[blacklinesafety.com/analytics](https://blacklinesafety.com/analytics)

# BLACKLINE VISION CUSTOM ANALYTICS

## UNCOVER PATTERNS, UNLOCK INSIGHTS

Our team of data specialists can help you get more information and insights beyond Essential Reports through visualizations, predictive reporting and tools.



### MODIFICATIONS TO ESSENTIAL REPORTS

Make changes to an existing essentials interactive or emailed report including altering filters, graphs, visualizations, or data logic.

### CUSTOM INTERACTIVE REPORTS

Build a completely new interactive report with custom visuals displaying the metrics most important to you.



### CUSTOM PERIODIC EMAILED REPORTS

Get tailored reporting emailed to your team members' inboxes quarterly, monthly, weekly, or daily.

### GEOFENCING AND ZONE-BASED REPORTING

Leverage automatic calculation and display of any metric within specific operational area(s).



### DATA INGESTION AND INTEGRATION

Merge and analyze data from other sources and/or build a custom report integrating multiple data streams.

### SECURE DATA TRANSFER SUBSCRIPTIONS (SFTP)

Receive historical data exported from your Blackline Safety devices to support internal reporting.

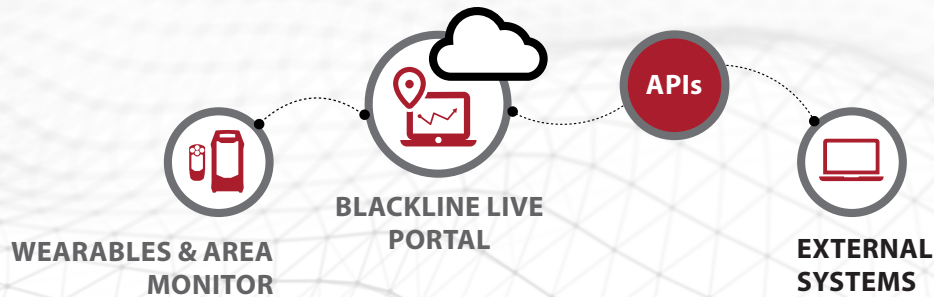


Together, we'll set up custom reports, review mockups, develop, test, and deploy. Make data-informed decisions for proactive HSE practices that improve safety, efficiency, and the bottom line.

[blacklinesafety.com/vision](https://blacklinesafety.com/vision)

# BLACKLINE API LIBRARY

Optimize your data pool and operations by transmitting and integrating device-level data from our connected wearables to your internal systems. Blackline delivers APIs that give you access to raw data, offering the freedom and flexibility to integrate into other systems and reporting to maximize efficiency.



[blacklinesafety.com/api](https://blacklinesafety.com/api)

## YOUR TRUSTED – AND SECURE – PARTNER

Our industry-leading safety technology means we take the stewardship of client data very seriously, with tight policies and procedures in place to safeguard information.

We go above and beyond to secure customer trust, the foundation of which is informed by these four pillars: information security, compliance, privacy, and reliability.

### ✓ INFORMATION SECURITY

- Highly advanced secure and scalable data protection services through Amazon Web Services (AWS)
- Data encryption between our field devices and cellular carriers
- IPSEC VEP tunnels between carrier facilities and Blackline Live
- Robust user configuration and permission options
- Single sign-on (SSO) and multi-factor authentication enabled
- Continuous threat detection and monitoring
- Tools to detect, identify, report, notify you and resolve security incidents in a timely manner

### ✓ COMPLIANCE

- Automated compliance checks based on AWS best practices and industry standards

### ✓ PRIVACY & DATA RESIDENCY

- SOC-2 and GDPR certified
- Separate European and North America domains to process and store your data in the country of origin

### ✓ RELIABILITY

- Track record of high-quality, reliable service delivering 99.5% uptime

## PASSIONATE ABOUT YOUR SUCCESS

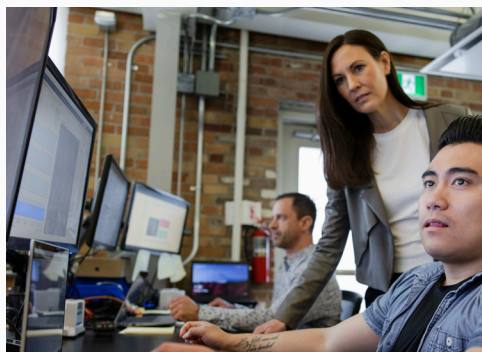
Blackline Safety offers complete, dedicated support—for you and your people—from day one. Our passion and dedication to our customers is why we have a retention rate of 100% and customers who have continued to choose us for over a decade.

By partnering with us you get:



Ongoing best practices, insights and support to help optimize your safety program

Access to the Blackline Support Center for tools, resources and how-to-guides for all our products and services



Dedicated Implementation and Client Success teams



## Ready to learn more?

Contact us to discover how to unlock more value from your data.

**NORTH AMERICA** TOLL-FREE +1.800.486.8889 | [sales@blacklinesafety.com](mailto:sales@blacklinesafety.com)

**EUROPE** PHONE +44 1787 222684 | [eusales@blacklinesafety.com](mailto:eusales@blacklinesafety.com)

**INTERNATIONAL** PHONE +1.403.451.0327 | [sales@blacklinesafety.com](mailto:sales@blacklinesafety.com)

**blacklinesafety**